

PORTALS FALL 2008 | VOLUME 6 | ISSUE 2

# pathways

turning lives around since 1955

## Western Avenue Project Hits Key Milestone

*Fundraising Efforts to Enhance Recovery & Wellness Center Reach 60% of its Goal*

A new full-service Recovery and Wellness Center at Portals' South Los Angeles facility is well on its way toward becoming a reality.

The Western Avenue Renovation Project Capital Campaign, launched earlier this year by the Portals Foundation Board of Trustees, has already raised more than 60% of the \$2.3 million needed to enhance the agency's Recovery and Wellness Center at the corner of 39th Street and Western Avenue. Ground-breaking is scheduled for early March 2009 and the grand re-opening for May 2010.

Through the Mental Health Services Act (MHSA), Portals is receiving \$1.6 million in annual funding to serve Transitional Age Youth, Adults and Older Adults in Full Service Partnership (FSP) programs. In South Los Angeles alone, this new funding will allow Portals to serve 150 to 200 additional members – a 50% increase – for a total of nearly 500 members served each year at this location.

"Accommodating this influx of new clients is the primary reason why Portals is in need of an enhanced facility," said Jim Balla, President of the Portals Foundation Board of Trustees and Executive Vice President and Chief Operating Officer of Pacific Clinics.

"The renovation will maximize the current program space to accommodate an array of comprehensive mental health support services – such as socialization,

housing, education and employment – for Portals members," Mr. Balla said. "In addition, the project will increase the number of available transitional housing beds from 20 to 28 and will include the installation of an elevator that will allow members with physical disabilities to access programs on the building's second floor. The new facility will also have improved security."

CONTINUED ON PAGE 2



The tireless efforts of the Western Avenue Renovation Project Capital Campaign committee have resulted in \$1.4 million raised through September 15, 2008. Left to right: Steering Committee members Richard Dominguez (Chair), Mike Dunn, William Molinski, Ron Banks and Jim Balla. (See their profiles on page 7.)

## Member's Personal Journey Leads to Open Road

*Patricia Taylor Conquers Numerous Challenges En Route to a Gratifying Career with Metro*

As a bus driver for the Los Angeles County Metropolitan Transportation Authority (better known as Metro), Portals member Patricia Taylor is well aware that passengers rely on her to get them to their destinations safely and on time. It was not long ago, however, that she would not have been able to perform this task: she was homeless and abusing drugs. Ms. Taylor began her journey of recovery from severe mental illness and substance abuse two years ago, and credits Portals' caring clinical staff for helping her accomplish her goal of recovery; they supported her all along the way.

Ms. Taylor was raised by a single mother in Louisiana. At age nine, her mother died and she moved to Los Angeles to live with her older sister. After returning to Louisiana to complete her high school



Patricia Taylor

CONTINUED ON PAGE 2

### IN THIS ISSUE:

Western Avenue Renovation Project Page 1

Message from the Divisional Director Page 2

Meet Our New Divisional Staff Page 3

Portals/USC Research Partnership Update Page 4

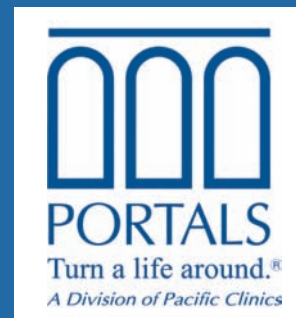
Donor Spotlight: Key Drug Pharmacy Page 5

Donor Recognition & Giving Opportunities Page 6

Capital Campaign Steering Committee Page 7

Pacific Clinics Training Institute Page 8

recovery • wellness • reintegration





Gil Abdalian

## MESSAGE FROM THE DIVISIONAL DIRECTOR

Welcome to the Fall 2008 issue of *Pathways*, which focuses on our comprehensive mental health services for men, women and children in South Los Angeles. As you will read, Portals is continuing to expand and enhance its programs in this area in response

to unmet community needs and with funding provided by the Mental Health Services Act (MHSA). Our goal is to continue as valued community partners contributing to the improvement of the neighborhoods where we have a presence.

Our important expansion efforts include a major renovation of our facilities located at 39th Street and Western Avenue in South Los Angeles. The renovation will specifically allow us to increase much-needed program space to create a new Recovery and Wellness Center with comprehensive mental health care – including housing, education, and employment services – to members, including youth. To complete the renovation, a capital campaign was

launched earlier this year by the Portals Foundation Board of Trustees, which is working tirelessly to raise the required \$2.3 million. The capital campaign is described on Page 1, and the Capital Campaign Steering Committee is profiled on page 7.

In the area of new programs, Portals has recently launched a Field Capable Clinical Services (FCCS) Program – funded through MHSA – for individuals with mental illness who are unable to access services at our offices.

The FCCS Program delivers services in the community, fitting into the service continuum between Portals' Full Service Partnership (FSP) Programs and its Recovery and Wellness Centers. (See story on page 5.)

None of these developments would be possible without the hard work of our talented and dedicated staff, which has been strengthened with the additions of Greg Swift, LMFT, as our Associate Divisional Director, and Delorse Mathews, MSW, ACSW, as Program Manager for Portals' FSP Programs for Older Adults. Both Greg and Delorse are profiled on page 3.

Portals and its parent organization, Pacific Clinics, are continuing the very important research projects initiated in past years through funding from the National Institute of Mental Health and under the direction of John Brekke, PhD, from the University of Southern California's School of Social Work. An update on our research efforts – and how the findings will be translated into practice to improve care to members – is provided on page 4.

Finally, please join me in saluting Patricia Taylor, a Portals member who has turned her life around in a very impressive way, and Phil Fontilea, director of Key Drug Pharmacy, whose staff provides a high level of service to persons with mental illness who count on receiving their medications without delays and without fuss. (See stories on page 1 and page 5.)

I invite you to enjoy the Fall 2008 edition of *Pathways*. And I thank you for your continued support and generous contributions, all of which helps us focus on our mission to turn lives around.

Sincerely,

Gil Abdalian MS, MFT, MBA

## Personal Journey, continued from page 1

education, she decided to rejoin her sister in Los Angeles.

Unfortunately, Ms. Taylor found challenges in adulthood as an undiagnosed mental illness became more severe. "I got involved with the wrong people, started using drugs, and could not hold down a job," she said. "I couldn't function and turned into a loner, to the point where I didn't even see my sister."

Ms. Taylor became homeless and -- for the next fifteen years -- lived in an alley near the corner of Washington Boulevard and Western Avenue in South Los Angeles. She yearned to leave, but did not know how. Eventually, she realized something was wrong and, in her bravest moment, decided to make the long trek to the psychiatric ward at the L.A. County USC Medical Center and check herself in for treatment. "It felt like a burden was being lifted," said Ms. Taylor. "It was a life-changing decision."

While receiving treatment, Ms. Taylor was diagnosed with co-occurring major depression and substance abuse disorders. She also met Portals service coordinator Lydia Banks, who was moved by her story and her willingness to do anything to improve her life. Ms. Banks succeeded in getting her a residential spot at the Alcohol Center for Women, where she quickly learned new job skills and became a leader among her fellow residents.

With the help of another Portals service coordinator, Arzell Scoggins, Ms. Taylor began to pursue employment opportunities and became a volunteer at Portals' Community Connections Clubhouse program on Western Avenue. She then caught the attention of employment specialist Sharon Walker, who recommended she be hired as a mail carrier for the agency. It was Ms. Taylor's first job in 25 years, and she performed it with distinction. During this exciting time, she also maintained her own independent housing.

Ready for a new challenge, Ms. Taylor approached Community Connections Clubhouse Job Developer Galen Babb. With knowledge of her love for driving, he presented her with the opportunity to drive for Metro. After a strenuous two-week training program and getting her bus driver's license, Ms. Taylor became a full-time employee for Metro. Her service area includes mid-city and South Los Angeles. She credits the Portals staff at Western Avenue with helping her get her life back on track faster than she would have ever imagined.

"Thanks to the counseling and training I received through Portals, I start all of my goals with the intention of finishing them," she says. "Portals is the best thing that ever happened to me."

## Western Avenue, continued from page 1

As of September 15, the project has received financial commitments from: Washington Mutual; Orrick, Herrington & Sutcliffe; the Emergency Housing Assistance Program (EHAP); the Weingart Foundation; The Ralph M. Parsons Foundation; Key Drug Pharmacy; Chapman and Associates Charitable Foundation.

Foundation trustee Richard Dominguez, who serves as Capital Campaign Chair, said that the organization will seek the remaining funds from individuals, foundations and corporations, with a special focus on the financial, legal and real estate industries.

"We are looking to these three types of funders to play a pivotal role in our campaign," said Mr. Dominguez, "as we look ahead to the grand re-opening in 2010."

The Honorary Co-Chair is Wayne-Kent Bradshaw, National Community Affairs Relationship Manager for Washington Mutual. Along with Mr. Bradshaw and Mr. Dominguez, the Capital Campaign committee is comprised of individuals dedicated to Portals' mission of turning lives around. (See page 5 for Capital Campaign Steering Committee profiles.)

Individual contributors include Fred and Leonore Kayne, Bernard Taran, Robert Zigman, Kathleen Drummy, Georgia Franklin, Maury Gentile, David Weiss and Susan Mandel, PhD, President and CEO of Pacific Clinics. Capital Campaign Steering Committee members Richard Dominguez, Bill Molinski, Michael J. Dunn, Jim Balla and Ronald C. Banks have also committed financially to the campaign.

## We Need Your Support...

To learn more about what you can do to help the Western Avenue Renovation Project and Capital Campaign, please contact Ivan Rodriguez, Development Associate, at (213) 639-2577 or [irodriguez@PacificClinics.org](mailto:irodriguez@PacificClinics.org), or visit [www.portalshouse.org](http://www.portalshouse.org). For a Western Avenue fundraising update, please see page 6.

## Greg Swift Adds Unique Expertise as Associate Divisional Director

In 1996, Portals opened its Twin Peaks Dual Diagnosis Residential Program, and one of its first supervisors was a young man just starting his career in mental health. Twelve years later, that same fellow has returned to Portals, now a Division of Pacific Clinics. Only this time, he brings with him a wealth of knowledge and experience, and is prepared to contribute on a much higher level.

Greg Swift, LMFT, joined Portals this past April as its Associate Divisional Director, with responsibility for staff hiring/training, quality assurance, and program service delivery and monitoring across all divisional programs and sites. He is also conducting MHPA Full Service Partnership (FSP) Program training and recruitment, overseeing the development of Portals Division's Western Avenue Recovery and Wellness Center, and working to turn the Center into a location offering comprehensive services including housing, socialization, education and wellness. (For an update on the Western Avenue Project, please see page 1.)

"Portals' services have always been empowering to members," Greg commented as he recalled those he helped at Twin Peaks in the past, "so, when the opportunity presented itself to return as Associate Divisional Director, I knew it was a great chance for me to contribute in an important way."



Greg Swift, LMFT

Rejoining Portals with over 12 years of experience in the mental health field, Greg has experience in direct service delivery, clinical supervision, and program administration related to fiscal and regulatory requirements. According to Gil Abdalian, Portals' Divisional Director, "Greg's role requires knowledge of mental health, the mental health system of care, clinical service delivery, and funding. He has exceptional command of all of these critical areas."

Greg's ability to take on multiple roles is no surprise since mental health is actually his second career. The Southern California native spent a dozen years as a successful landscape contractor. Coming from a large family that stressed volunteerism and philanthropy, he saw mental health as a field in which he could contribute and make a difference.

Having worked with adult residential, older adult inpatient, transitional-age youth and adult outpatient services such as AB 2034 homeless case management, MHPA Full Service Partnership, and Assertive Community Treatment (ACT) programs, Greg is trained in the bio-psychosocial rehabilitation model and has training in Dialectical Behavioral Therapy (DBT) and Recovery Model services. Prior to joining Portals, he served as Regional Administrator at Telecare in Ventura County, where he supervised a variety of mental health programs and assisted in the organization's ten-year plan to end homelessness. He also held positions at College Hospital, Bellflower Hospital and Homes for Life Foundation.

Greg has a master's degree in counseling psychology from National University and is a Licensed Marriage and Family Therapist (LMFT).

## Delorse Mathews Ready for the Challenge of Providing Expanded Services to Older Adult Population

When Portals' MHPA-funded Full Service Partnership (FSP) programs for older adults in Metro and South Los Angeles were first being structured, it was important that a leader be found who was uniquely qualified to face the challenges that come with providing mental health services to a population that is reluctant to seek or accept them.

Delorse Mathews, MSW, ACSW, is one such person ready to meet that challenge. This past January, Delorse joined Portals as Program Manager for its Older Adult programs in Service Areas 4 and 6, providing leadership to a team that provides an array of services to individuals ages 60 and older with serious mental health conditions.

"When I first heard that Portals was going to offer expanded mental health services to the older adult population, I was very pleased," said Delorse. "I believe this is a strong area of need, as there are so many underserved seniors out there."

Delorse oversees a staff of thirteen, including four Service Coordinators, two psychiatrists and two nurses that assist up to 50 members at any given time. The programs are designed to help older adults



Delorse Mathews, MSW, ACSW

address their emotional and physical health, living situation, social relationships and other issues impacting their lives. "Our FSP Program provides individualized services that go beyond the scope of traditional outpatient mental health services," she explained.

"The significance of Portals' services is that we go where older adults live, even if they don't have a

home," Delorse continues. "It is a very challenging form of outreach, particularly to the African-American and Latino population, to seniors that either fear or simply do not understand being labeled as mentally ill. But, it's rewarding when we find someone living on the street after years of not receiving any type of medical treatment to see our FSP program staff work successfully to place that individual in a safe living environment and arrange for proper medical and psychiatric care."

Before arriving at Portals, Delorse had several years of experience working with older adults, most recently as a Community Liaison for VITAS Innovation Hospice Care and SCAN Network, where she provided valuable social services programming. She also spent valuable time in youth-based settings such as the Head Start Mental Health program for children, group homes for boys and girls, residential treatment centers for teenagers and as a behavioral aid for severely emotionally disturbed teenagers.

A native of Memphis, Tennessee, Delorse has been an Associate Clinical Social Worker since 2006. She has a master's and bachelor's degree in social work from Cal State Los Angeles, and a master's degree in counseling from the University of La Verne.

### Our members need special people like you!

At Portals, we consider our employees to be one of our most valuable resources. Through the efforts of our staff, Portals has become a premier mental health agency with an excellent reputation for quality care and service. Now a division of Pacific Clinics, we welcome you to be part of our ever-growing team.

**Therapists/Clinicians • Case Workers/Managers • Licensed Psychiatric Technicians/Vocational Nurses • Administrative/Support Staff**

To learn more about career opportunities with Portals and Pacific Clinics, please visit [www.PacificClinics.org](http://www.PacificClinics.org)



## Research Seeks to Bridge Scientific and Service Communities with Goal of Improving Care to Members

In the behavioral healthcare field, the gap between scientific researchers and service providers is often wide. Typically, studies of clinical practices designed to improve the quality of life for consumers are conducted in isolation, with findings published in journals not necessarily in wide distribution to practitioners. Similarly, the results of interventions with consumers are not easily or systematically reported back to researchers in order to better inform their thinking.

Narrowing this gap is the goal of a program funded by the National Institute of Mental Health (NIMH), the Interventions and Practice Research Infrastructure Program (IP-RISP). With leadership provided by John S. Brekke, PhD, of University of Southern California's School of Social Work, and funding from NIMH, an infrastructure to provide a platform for fostering science-to-service and service-to-science interchange is being developed. The IP-RISP project is providing important support for researchers at USC and community mental health providers at Portals and other divisions of Pacific Clinics to establish a working and sustainable partnership to make evidence-based mental health services available and acceptable for people in need of mental health care.

According to Dr. Brekke, "Among the highest priorities is bridging the scientific and service communities in order to transport efficacious interventions into typical care settings and provide these interventions to larger numbers of consumers."

The partnership with Dr. Brekke and his team at USC is bringing great benefits to Pacific Clinics as evidence-based practices are being brought to the field for implementation and further testing. As a result, the agency's consumers have opportunities to receive the latest evidence-based practices under development. In addition to this very significant project, Portals is participating in several other funded research projects under Dr. Brekke's direction.

1) Pacific Clinics is one of five organizations in a study of the impact – in terms of treatment outcomes



Dr. John Brekke (third from left) and his team of researchers from the USC School of Social Work meet weekly to discuss their findings on clinical studies in which Portals' staff and members take part.

– of the Mental Health Services Act on a sample of 500 consumers in Los Angeles County.

2) Portals is continuing its development of a model for spreading evidence-based interventions into everyday mental health settings. The model includes training and coaching agency staff on the new interventions, implementing the practices, and using a clinical database to assess results.

3) Again with funding from NIMH, Portals is participating in a study of how brain functioning of consumers contributes to their responsiveness to psychosocial treatment.

4) The USC School of Social Work has launched an evidence-based practice Field Unit, consisting of MSW and Occupational Therapy interns. The goal is to train these students in the latest and most effective psychosocial interventions so that they can shape

their own practice and particularly important, influence the clinics in which they work in the future.

5) With funding from the USC Keck School of Medicine, Portals is working with UCLA researchers to explore whether the lives of consumers diagnosed with schizophrenia are accurately reflected in functional and neuro-cognitive tests that are typically used in a range of research in schizophrenia.

6) Linking mental health and health services for consumers is the focus of another research study, this one funded by UniHealth Foundation. The project involves developing a peer navigator system that features support and training for healthcare and mental healthcare providers, and training and support for consumers in accessing and utilizing these services.

7) An NIMH-funded study to promote culturally responsive services, a collaborative effort between USC researchers (headed by Dr. Ann Marie Yamada), Portals staff and their members, is designed to generate practical information that can be used to enhance the recovery of persons of all cultural backgrounds.

8) Examining how consumer hope and the relationship with a service coordinator affects consumer outcomes, principal investigator Eri Nakagami studied 100 Portals members and explored their treatment process to determine if there is a link between a consumer working alliance, hope and the level of outcomes.

"These research projects represent an extraordinary win-win situation for our consumers, clinicians, Portals, and USC School of Social Work as the bridge between research and practice is strengthened," reports Laura Pancake, LCSW, a member of the research projects team. "It's exciting to see the effective 'real-time' transfer of knowledge to treatment of our consumers. We're also building a clinical team that understands and embraces evidence-based practices every day in their work with our members."

Updates on Portals-related research efforts – and the benefits to our many members – will continue in future editions of *Pathways*.

## USC Partnership More Than 20 Years Strong

Portals began working with John S. Brekke, PhD, in 1987, when he began a pilot program which became the foundation for his first National Institute of Mental Health-funded project. Since then, Dr. Brekke, his research staff at the USC School of Social Work, and Portals service coordinators have examined how the Portals model for service delivery affected patients with schizophrenia in such functional areas as work, social interaction, independence, self-esteem, and satisfaction with life.

In the studies that have followed, Dr. Brekke and his team discovered that the higher the intensity and the sharper the focus of services improved the outcomes among Portals' members in these critical functional areas. In subsequent NIMH-funded studies, USC researchers have found that in addition to functional improvement over time, members at Portals show



improvements in their brain functioning. Additionally, this cognitive improvement is strongly related to their functional gains, and also to how well they respond to the services they receive at Portals. This exciting work continues.

## Field Capable Clinical Services Team Reaches Out to Members

*Portals Staff Provides Services to Homebound Adults Unable to Access Care*

**T**he Mental Health Service Act-funded Full Service Partnership (FSP) programs launched by Portals have resulted in increased and enhanced services to transitional-age youth, adults, and older adults in need of behavioral health-care. However, there still are significant portions of our population that are unable to leave their existing environments – even for a short time – to access these services.

To counter the problem of clients that are homebound, isolated or homeless, Los Angeles County's Department of Mental Health has contracted with Pacific Clinics for a new MHSA-funded program called Field Capable Clinical Services (FCCS). One of these FCCS programs was launched by Portals on April 1, 2008, at its Mariposa Clubhouse Recovery and Wellness Center.

The FCCS is a field-based program designed to serve isolated or homebound adults who may be unable to care for themselves because of a combination of mental illness and a limited/non-existent support system. While the first FCCS programs initially targeted older adults, it has been expanded to include adults 21 to 59 years of age. FCCS fits into the continuum between Portals' Clubhouse/Wellness and FSP Programs.

Since the program requires that at least 60% of FCCS services be field-based, staff routinely works with members/clients in their homes and community settings, tailoring services to their recovery-based goals. FCCS services include: outreach and engagement, comprehensive assessment and care planning, mental health therapy, rehabilitation skills training, intensive case management, psychiatric evaluation, and medication support.

According to Peter Cashorali, MFT, Interim Mariposa/FCCS Director, the biggest benefit of the program involves field-based outreach. Says Mr. Cashorali: "The program allows us to see our members in their own environment. As a result, members feel they are equals when dealing with us as providers." In allowing members to feel more involved in their recovery process by having it happen on "their own turf," Mr. Cashorali sees FCCS as an "enormous opportunity to help this underserved population."

There are currently 25 Mariposa Clubhouse members benefiting from FCCS services, with a plan to double that number in the coming months. Portals' Divisional Director Gil Abdalian, who oversees a full-time staff of five at Mariposa, envisions additional FCCS programs at all Portals sites, to better meet the needs of underserved individuals.



*Portals' Field Capable Clinical Services (FCCS) program allows service providers to visit members in their own living environment, which often results in improved forms of treatment.*

"It's an exciting time!" proclaims Mr. Abdalian, adding that "FCCS programs provide a lifeline to the persons with mental illness who are unable to escape from their normal settings. By allowing us to go out into their world, we're better equipped to give them the treatment they need."

## Donor Spotlight: Key Drug Pharmacy in Koreatown

*Longtime Community Fixture Makes its Clients a Top Priority*

**F**or Portals members who live in and around the Koreatown area, Key Drug Pharmacy is more than just a place where they pick up their prescriptions. It is an organization that makes them top priority regardless of their situation.

Established over three decades ago and located on the corner of Vermont Avenue and 8th Street, Key Drug Pharmacy is arguably the largest mental health-focused pharmacy on the West Coast, partnering with numerous state agencies and nonprofit organizations to ensure that the mentally ill clients for whom they provide medications always get them in a timely manner. The firm operates with an unorthodox business approach that puts the needs of the client ahead of anything else.

"Our clients already have a major challenge: combating their mental illness. What is a minor snafu to us may be overwhelming to them, especially when it comes to receiving their medication," says Pharmacy Director Phil Fontilea who has a "Meds First, Get Paid Later" philosophy. "Rather than turn them away in their time of need, our staff works with clients and their support system to make sure they get what they need, even if it means that we get paid later."



Originally an investment banker, Mr. Fontilea's career path – and true calling – was influenced by his late mother, who herself was mentally ill and also afflicted with Alzheimer's Disease. Since joining Key Drug Pharmacy in 2000, Mr. Fontilea has become an influential force in – as well as one of the biggest advocates of – California's mental health community, working with service providers to ensure better service to clients.

*"Rather than turn them away in their time of need, our staff works with clients and their support system to make sure they get what they need, even if it means that we get paid later."*

*- Phil Fontilea*

He is also deeply involved with the National Alliance on Mental Illness (NAMI) and recently joined the Board of Directors of its Urban Los Angeles chapter. In addition to their time, Mr. Fontilea and his 15-person staff have also contributed financially to Portals regularly for the past decade and recently lent their support to the Portals Foundation's Western Avenue Renovation Project. (See story on page 1.)

It is this type of dedication to clients and their recovery that has made Key Drug Pharmacy a household name in the mental health community, relying solely on their established reputation and word-of-mouth for their business. "I'm very proud of the fact that when people mention the name Key Drug Pharmacy, it's usually followed with the comment 'Key cares.' That is when I know that our staff's hard work is well worth it," says Mr. Fontilea.

## Western Avenue Fundraising Update

### Renovation Project Offers Multiple Giving Opportunities

With the capital campaign for the Western Avenue Renovation Project having raised approximately \$1.4 million to date, we need your help to achieve their financial goal of \$2.3 million which will result in a new Recovery and Wellness Center which will open in March 2010.

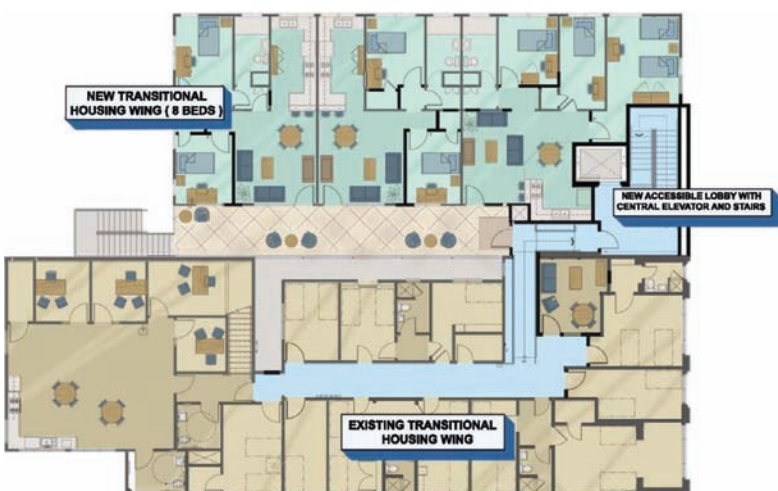
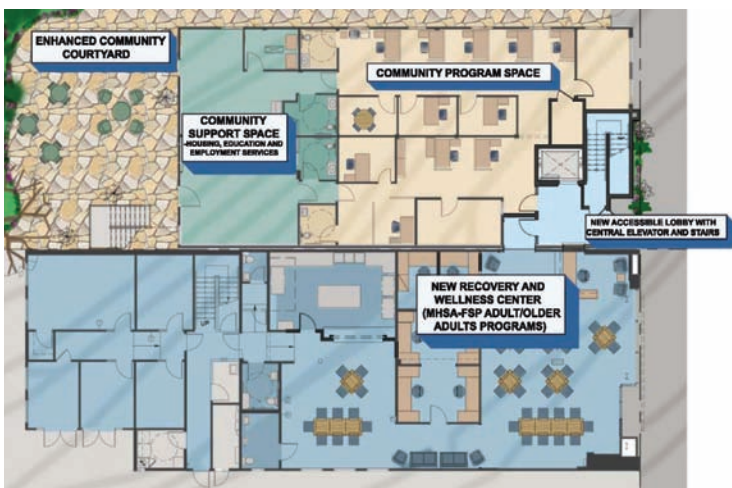
There are various ways to contribute. They include naming opportunities for five key areas of the renovated facility:

|                                |           |
|--------------------------------|-----------|
| Transitional Housing [8 Units] | \$250,000 |
| Recovery and Wellness Center   | \$100,000 |
| Community Courtyard            | \$75,000  |
| Foyer/Lobby                    | \$50,000  |
| Tenant College                 | \$35,000  |

Additionally, leadership contributions can be made to the campaign, which will be recognized on a donor wall located prominently in the foyer of the new center.

|                              |          |
|------------------------------|----------|
| Turn a Life Around® Champion | \$25,000 |
| Education Benefactor         | \$15,000 |
| Employment Patron            | \$7,500  |
| Housing Investor             | \$5,000  |
| Family Advocate              | \$2,500  |
| Wellness Provider            | \$1,000  |
| Community Friend             | \$500    |
| Neighborhood Member          | \$250    |

For more information on how to make a contribution to this life-changing campaign, please contact Ivan Rodriguez at (213) 639-2577, [irodriguez@pacificclinics.org](mailto:irodriguez@pacificclinics.org) or visit [www.portalshouse.org/westernavenue.html](http://www.portalshouse.org/westernavenue.html) for details.



As these floor plans show, the Western Avenue Renovation Project will maximize space so that an enhanced Recovery and Wellness Center can increase member services by 50%.

We are deeply grateful to our donors whose support is essential to our success in serving our members.

January 1 to September 15, 2008

#### INDIVIDUALS

Mr. Jim Balla  
 Mr. and Mrs. Howard Corman  
 Ms. Betty L. Dahlquist  
 Mr. Richard M. Dominguez  
 Ms. Kathleen Drummy  
 Ms. Georgia Franklin  
 Mr. Maury Gentile  
 Mr. Al Ginepra  
 Mr. Monty Hall  
 Mr. and Mrs. Fred Kayne  
 Andrew Manley, PhD  
 William Molinski, Esq.  
 Ms. Monique Poche  
 Ms. Gail Russell  
 Mr. and Mrs. Maxwell H. Salter  
 Ms. Diane Schultheis  
 Irwin M. Schultz, MD  
 Mr. and Mrs. Norton Sharpe  
 Mr. Danilo Teodoro  
 Mr. and Mrs. Robert A. Wilkins  
 Mr. Robert Zigman

#### BUSINESS AND COMMUNITY ORGANIZATIONS

Key Drug Pharmacy  
 United Way of Greater Los Angeles

#### IN-KIND

Mr. Jim Balla  
 DeNovo Software  
 Ms. Eri Nakagami  
 Ms. Tracia Reynolds  
 Mr. Ivan Rodriguez  
 Shelter Partnership, Inc.

#### TRIBUTE GIFTS

##### In honor of Eri Nakagami and Robert Case's wedding:

Mr. and Mrs. Carl Barenboim  
 Ms. Adrian Bleidestel  
 Mr. Willis H. Case  
 Ms. Jeri Cavanaugh  
 Ms. Lucille Ferrari and  
 Ms. Pamela Hathaway  
 Mr. and Mrs. Gregory B. Lauder  
 Mr. and Mrs. Joseph A. Rader  
 Mrs. Susan Fox-Sanchez and  
 Mr. John Sanchez  
 Ms. Julia D. Smith

*(If we have inadvertently omitted your name, we deeply apologize. Please let us know and we will include your name in our next newsletter.)*

### Western Avenue Renovation Project Capital Campaign Committee

#### Honorary Chair

Wayne-Kent Bradshaw  
 National Community Affairs  
 Relationship Manager  
 Washington Mutual

#### Chair

Richard Dominguez  
 Richard Dominguez  
 & Associates

James J. Balla, MBA  
 Executive Vice President  
 & COO  
 Pacific Clinics

Ronald C. Banks  
 Chief (Retired)  
 Inglewood Police Dept.

Michael Banner  
 President  
 Los Angeles LDC, Inc.

George D. Drucker  
 Chief Marketing Officer  
 RF/Binder Partners, Inc.

Michael J. Dunn  
 President  
 Dunn Property Group

Cindy Jones  
 Commercial Real  
 Estate Advisor

Susan Mandel, PhD  
 President and CEO  
 Pacific Clinics

Andrew Manley, PhD  
 President and Founder  
 New West Technical  
 Academy

Lary J. Mielke  
 Chair, Board of Directors  
 Pacific Clinics

William Molinski  
 Partner  
 Orrick, Herrington  
 & Sutcliffe, LLP

Blair Salisbury  
 CEO  
 Hospitality Management  
 Services

David H. Weiss  
 Senior Vice President  
 Howard Capital  
 Management

## Western Avenue Renovation Project Capital Campaign Steering Committee



**Richard Dominguez,**  
**Campaign Chair**  
Founder, Richard Dominguez & Associates

Richard Dominguez' involvement with Portals goes back all the way to 1970, when he first joined its Board of Governors. Three years later, he would become Board Chair, a role in which he would serve multiple times in the nearly-four decades that followed. Now a member of the Portals Foundation Board of Trustees, Mr. Dominguez is chairing the Western Avenue Renovation Project Capital Campaign Committee because he believes strongly in the positive influence a full-service Recovery and Wellness Center will have in the South Los Angeles community.

A long-time mental healthcare advocate with business roots in the banking field, Mr. Dominguez has a distinguished reputation among his peers. The Co-founder, President and CEO of Industrial Bank – which merged with Washington Mutual in 1999 – he retired from that position and founded Richard Dominguez & Associates to provide consulting services to business and financial institutions. He also utilized his knowledge of banking on the government level while serving as California State Superintendent of Banks.

Quote: "My confidence for the future is based on Portals' past success in meeting many challenges during the past 53 years."



**Wayne-Kent Bradshaw**  
**Honorary Campaign Chair**  
National Community Affairs Relationship Manager, Washington Mutual

Wayne-Kent Bradshaw currently serves as National Community Affairs Relationship Manager for Washington Mutual, with which he has been associated since 2003. In his current role, he oversees the company's community activities in California, Nevada and Arizona, and was instrumental in Washington Mutual's support of Portals' 50th Anniversary Golden Bell Awards Gala in 2006, which also resulted in early financial support for the Western Avenue Renovation Project.

Prior to joining Washington Mutual, Mr. Bradshaw was the President and CEO of Family Savings Bank, the largest African-American controlled financial institution in California.

At the request of his good friend Richard Dominguez, he agreed to come aboard as Honorary Chair, and use his experience and expertise in community issues to help the Portals Foundation achieve its fundraising goal of \$2.3 million in order to complete the renovation project.

Mr. Bradshaw is a graduate of the University of Southern California's Marshall School of Business.

Quote: "Portals has served South Los Angeles for decades and with the completion of the Western Avenue Renovation Project, it will continue to serve the community in future decades."



**Ronald C. Banks**  
Chief (Retired)  
Inglewood Police Dept.

A highly decorated law enforcement veteran with 40 years of public service to his record, Ron Banks serves as Chair of the Portals Foundation Board of Trustees, whose current fundraising focus is the Western Avenue Renovation Project. From 1981 to 2007, he was a member of Portals' Board of Directors, serving as chair from 1984 to 1989 and from 1998 to 2001. Mr. Banks has been a member of the Pacific Clinics Board of Directors since July 2007 and currently serves as its Vice Chair.

Mr. Banks began his career in 1966 with the Los Angeles Police Department, serving with fellow Portals advocate Jesse A. Brewer. In 1998, he was appointed chief of the Inglewood police, where he served until his retirement in April 2006. During this time, Mr. Banks became interested in mental health issues when he witnessed firsthand the plight of the homeless mentally ill that were arrested, detained, then subsequently returned to the streets the next day without any resolution to their situations.

Even in retirement, he continues to be active in local, county and state organizations, including serving on Pacific Clinics' Board of Directors. Mr. Banks offers a unique perspective and critical expertise in working with the homeless and mentally ill.

Quote: "The ultimate goal is to create a Recovery and Wellness Center to effectively develop our members' independent living skills...by the Foundation's dedication to creating a more efficient and attractive facility as part of an improving neighborhood."



**Michael J. Dunn**  
President and CEO,  
Dunn Property Group

A member of the Portals Foundation Board of Trustees since 2005, Mike Dunn was introduced to Portals and its mission while serving as vice president of the Wilshire Chamber of Commerce in the 1990's. An experienced commercial real estate professional, his first involvement with Portals was as a member of its Facilities Committee in 2001. In 2005, he joined Portals' Strategic Planning and Resources Committee (SPARC), created to provide a seven-year strategic plan. During his tenure, Mr. Dunn's assistance with administering its ongoing commercial and residential property needs and its lease and license agreement negotiations has been invaluable.

A sixth-generation California real estate professional, he founded Dunn Property Group in 2005 after 20 years with the Charles Dunn Company, where he was a top-producing broker and managed the Los Angeles and San Fernando Valley brokerage offices.

Quote: "When I realized what an amazing difference Portals made in improving the lives of many of our less fortunate citizens suffering with mental illness, I was happy to make a meaningful contribution."



**William Molinski, Esq.**  
Partner, Orrick, Herrington & Sutcliffe, LLP

Bill Molinski was first introduced to Portals in 1993 by former Board of Governors member Alma Fitch. That same year, after attending a Golden Bell Awards Gala, he became further impressed with Portals' good work and soon joined its Board of Directors, where he served on various committees and introduced future Board members to the organization. He also provided pro-bono legal advice to Portals on its trademark (Turn a Life Around®) and other matters. In 2002, Mr. Molinski joined the Portals Foundation Board of Trustees.

Mr. Molinski joined Orrick in 2000, becoming Partner in 2003. He deals in all aspects of commercial litigation emphasizing trade secrets, trademarks and other intellectual property. Mr. Molinski also served as Orrick's Community Responsibility Partner from 2001 to 2007. He is a member of the State Bar of California, Litigation and Intellectual Property Groups.

Quote: "I am constantly amazed by the stories of the members who have spoken to me at the various Portals events on how they have gone from utter hopelessness to having healthy and normal lives, in large part because of resources provided by Portals."



**James J. Balla, MBA**  
Executive Vice President and COO, Pacific Clinics

Jim Balla joined Portals in 1998 as Executive Vice President and COO. In October 2001, he became Portals' President and CEO, a position he held until assuming his current role with Pacific Clinics on July 1, 2007. Mr. Balla has been with the Portals Foundation Board of Trustees since August 2002. He is an established human services and healthcare management professional with more than 25 years of experience.

At Pacific Clinics, Mr. Balla provides leadership and direction for clinical and administrative operations encompassing a staff of nearly 1,200 – with program and administration sites located across five counties. Mr. Balla also coordinates senior management activities, assists in strategic planning, program and board development, and serves on the Board of Directors.

Prior to Portals and Pacific Clinics, Mr. Balla held key management and consulting positions with USO Los Angeles, Inc., Verdugo Mental Health Center, Family Service of Los Angeles, and NHI Medical Groups, Inc. He has served on the Board of Directors of the Association of Community Human Service Agencies, and the California Council of Community Mental Health Agencies.

Quote: "The renovation of Portals' Western Avenue Recovery and Wellness Center represents our continued commitment to expand and enhance mental health services in South Los Angeles."

# Meeting the Demand for Behavioral Healthcare Education



Pacific Clinics  
Training Institute

ADVANCING BEHAVIORAL HEALTHCARE LEARNING



**Professional, customized  
training to meet your  
needs – at your location,  
our location or online**

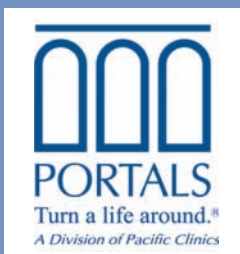
1-877-9MYPCTI / 1-877-969-7284 [www.myPCTI.org](http://www.myPCTI.org)

## Portals' Mission Statement

The mission of Portals is to enable people with psychiatric disabilities to recognize individual strengths and diversity, to live independently in the community and improve the quality of their lives through a process that promotes self-determination, productive activity, interdependence and self-help.

P O R T A L S Pathways • F a l l 2 0 0 8

Presorted  
First Class  
U.S. Postage  
**PAID**  
Glendale, CA 912  
Permit #276



PORTALS  
Divisional Headquarters  
679 S. New Hampshire Ave.  
Fifth Floor  
Los Angeles, CA 90005-1355

*Pathways is published by  
PORTALS  
A Division of Pacific Clinics*

Executive Vice President and  
COO, Pacific Clinics:  
Jim Balla, MBA

Divisional Director:  
Gil Abdalian, MS, MBA

Editor:  
Ivan Rodriguez

Editorial Associates:  
Brian Greene, Nancy Portilla  
Warren Riley and  
Diane Schultheis

Layout:  
Michelle Engler

Photography:  
Ivan Rodriguez

